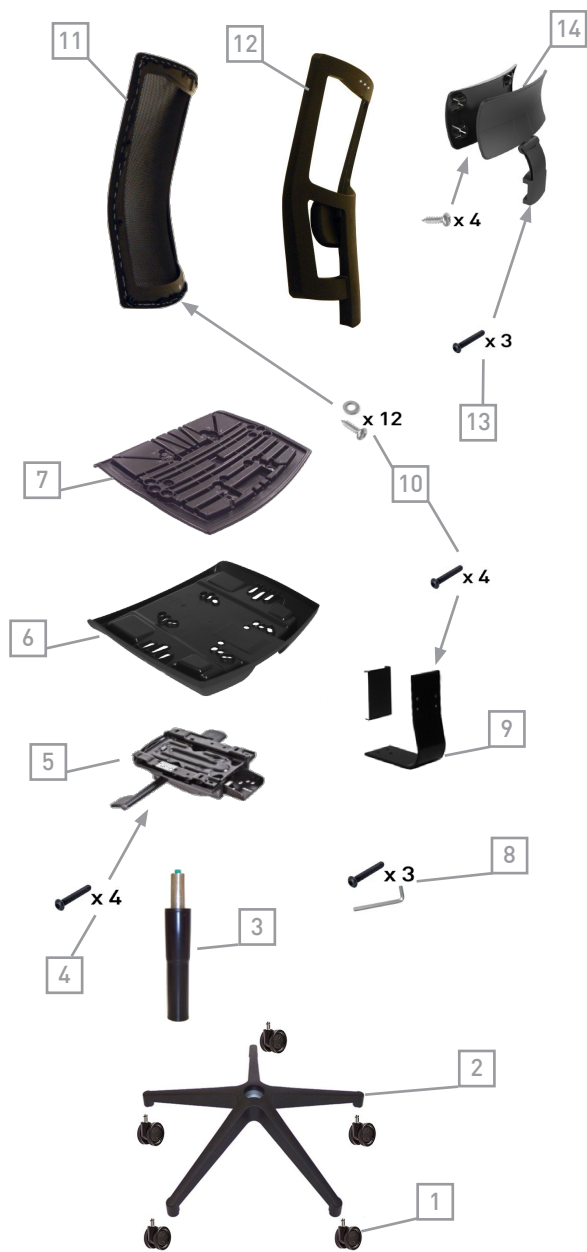


DRIADE



# DRIADE with headrest

## Sincro/Synchro



| Codice/Code              | Descrizione/Description   |
|--------------------------|---|
| 1. RWL010201             | Ruota Work libera Ø65mm, perno Ø11mm, nera<br>Work castor Ø65mm, push fit stem Ø11mm, black                                   |
| 2. B070201               | Base B07 Ø700mm, perno Ø11mm, nera<br>Base B07 Ø700mm, stem Ø11mm, black  |
| 3. P0901                 | Pompa a gas H.220/132, conifica H.100, nera<br>Gas column H.220/132, lower gas cone H.100, black                              |
| 4. 0609                  | Viti TBEI M6 x 30 T.Ø13 (con blocca filetto), brunito<br>Screws BHCS M6 x 30 H.Ø13 (with thread lock), burnished              |
| 5. PP0501                | Meccanismo sincro, 4 posizioni, nero<br>Synchro mechanism, 4 positions, black   |
| 6. SS0701                | Sottosedile art. 07 nero<br>Outer seat art. 07 black  |
| 7. SD071801FE            | Sedile interno art. 07 a 18 borchie e con barre in ferro, nero<br>Inner seat art. 07 with 18 nuts and inner steel bars, black |
| 8. KIT13062              | Kit viti M8x20 TBEI + Chiave esagoale<br>Screw kit M8x20 IHHEC + "L" hexagon key  |
| 9. LM1201                | Lama reggischianale art. 12, verniciata nera<br>Backrest support art. 12, black painted.                                      |
| 10. KIT14103             | Kit per fissaggio supp. schienale rete<br>Kit for mesh backrest frame assembly  |
| 11. SCI2201              | Interno schienale con rete nera assemblata art. 22<br>Inner backrest with assembled black mesh art. 22                        |
| 12. SCE2301              | Coprischianale art. 23 fori x poggiatesta + coprilama, nero<br>Outer backrest art. 23 with holes + plastic cover, black       |
| 13. KIT13071             | Kit viti combinata M6 x 16 D.13, zincata<br>Screw kit (Philips/slotted) M6 x 16 D.13, zinc                                    |
| 14. PGTE0401<br>PGTI0401 | Poggiatesta interno ed esterno con viti autofilettanti, nero<br>Headrest cover and shell with drywall screws, black           |

### \*Accessori/Optional:

|                 |  |
|-----------------|--|
| 15. B230218     | Base B23 in alluminio lucido Ø700mm, perno Ø11mm<br>Polished aluminium base B23 Ø700mm, stem Ø11mm   |
| 16. P0918       | Pompa a gas H.220/132, conifica H.75, cromata<br>Gas column H.220/132, lower gas cone H.75, chromed  |
| 17. RWL020201   | Ruota Work libera gommata Ø65mm, perno Ø11mm, nera<br>Work soft castor Ø65mm, push fit stem Ø11mm, black   |
| 18. BR28DX-SX01 | Bracciolo regolabile art. 28, destro-sinistro, nero<br>Adjustable armrest art. 28, right+left, black   |
| 19. KIT13008    | Kit viti M6 x 36 TBEI, brunito + Chiave esagonale per fissaggio braccioli<br>Screw kit M6 x 36 IHHEC, burnished + Hexagon key for armrest fixing |
| 20. PP0501TRS   | Meccanismo 05 sincro con traslatore, 4 posizioni, nero<br>Synchro mechanism 05 with seat slider, 4 positions, black                              |
| 21. SS1201      | Sottosedile art. 12 nero<br>Outer seat art. 12 black   |
| 22. GMSDI07     | Cuscino sedile in PU schiumato a freddo D.65 SP.35mm<br>PU cold foamed cushion for inner seat D.65 TH.35mm                                       |
| 23. SCHAT04     | Cuscino poggiatesta in PU schiumato a freddo<br>PU cold foamed cushion for headrest  |

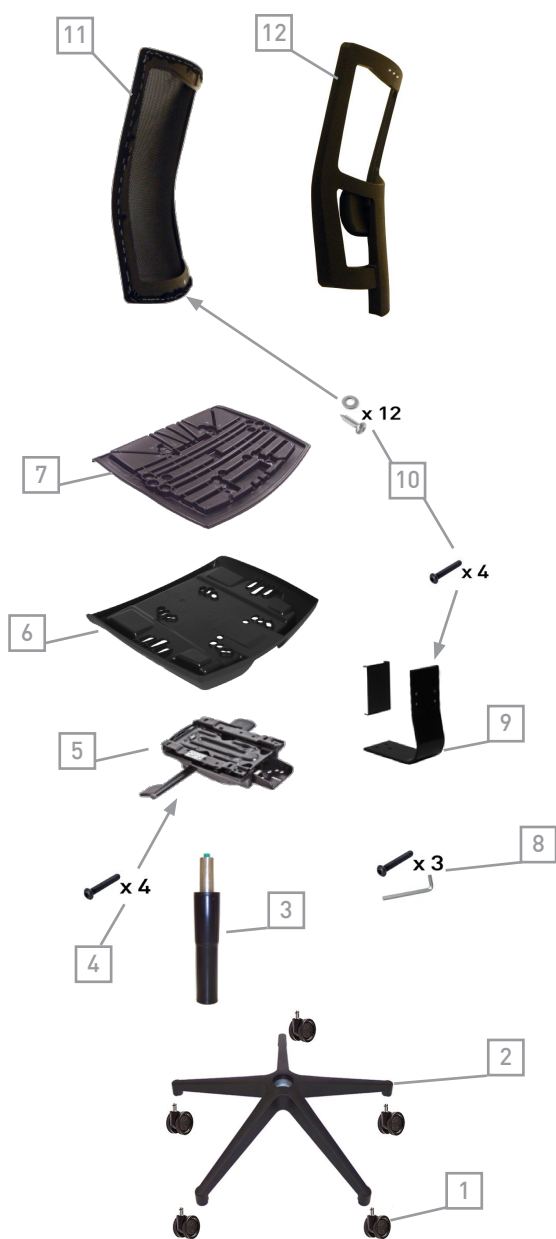
N.B.: altri braccioli e meccanismi sincro a scelta nel catalogo generale

N.B.: other armrests and synchro mechanisms are available on our general catalogue



# DRIADE

## Sincro/Synchro



| Codice/Code   | Descrizione/Description   |
|---------------|---|
| 1. RWL010201  | Ruota Work libera Ø65mm, perno Ø11mm, nera<br>Work castor Ø65mm, push fit stem Ø11mm, black                                   |
| 2. B070201    | Base B07 Ø700mm, perno Ø11mm, nera<br>Base B07 Ø700mm, stem Ø11mm, black  |
| 3. P0901      | Pompa a gas H.220/132, conifica H.100, nera<br>Gas column H.220/132, lower gas cone H.100, black                              |
| 4. 0609       | Viti TBEI M6 x 30 T.Ø13 (con blocca filetto), brunito<br>Screws BHCS M6 x 30 H.Ø13 (with thread lock), burnished              |
| 5. PP0501     | Meccanismo sincro, 4 posizioni, nero<br>Synchro mechanism, 4 positions, black   |
| 6. SS0701     | Sottosedile art. 07 nero<br>Outer seat art. 07 black  |
| 7. SD071801FE | Sedile interno art. 07 a 18 borchie e con barre in ferro, nero<br>Inner seat art. 07 with 18 nuts and inner steel bars, black |
| 8. KIT13062   | Kit viti M8x20 TBEI + Chiave esagoale<br>Screw kit M8x20 IHHEC + "L" hexagon key  |
| 9. LM1201     | Lama reggischianale art. 12, verniciata nera<br>Backrest support art. 12, black painted.                                      |
| 10. KIT14103  | Kit per fissaggio supp. schienale rete<br>Kit for mesh backrest frame assembly  |
| 11. SCI2201   | Interno schienale con rete nera assemblata art. 22<br>Inner backrest with assembled black mesh art. 22                        |
| 12. SCE2201   | Coprischianale art. 22, nero<br>Outer backrest art. 22, black   |

### \*Accessori/Optional:

|                 |  |
|-----------------|--|
| 13. B230218     | Base B23 in alluminio lucido Ø700mm, perno Ø11mm<br>Polished aluminium base B23 Ø700mm, stem Ø11mm   |
| 14. P0918       | Pompa a gas H.220/132, conifica H.75, cromata<br>Gas column H.220/132, lower gas cone H.75, chromed  |
| 15. RWL020201   | Ruota Work libera gommata Ø65mm, perno Ø11mm, nera<br>Work soft castor Ø65mm, push fit stem Ø11mm, black   |
| 16. BR28DX-SX01 | Bracciolo regolabile art. 28, destro+sinistro, nero<br>Adjustable armrest art. 28, right+left, black   |
| 17. KIT13008    | Kit viti M6 x 36 TBEI, brunito + Chiave esagonale per fissaggio braccioli<br>Screw kit M6 x 36 IHHEC, burnished + Hexagon key for armrest fixing |
| 18. PP0501TRS   | Meccanismo 05 sincro con traslatore, 4 posizioni, nero<br>Synchro mechanism 05 with seat slider, 4 positions, black                              |
| 19. SS1201      | Sottosedile art. 12 nero<br>Outer seat art. 12 black   |
| 20. GMSDI07     | Cuscino sedile in PU schiumato a freddo D.65 SP.35mm<br>PU cold foamed cushion for inner seat D.65 TH.35mm                                       |

N.B.: altri braccioli e meccanismi sincro a scelta nel catalogo generale

N.B.: other armrests and synchro mechanisms are available on our general catalogue